

MODULAR SYSTEMS

Modular structures to maximise
your improvement process

EZI SYSTEMS

CONTENT

03 Welcome To Our World

Global Market

About EZI Modular

How we Link with you

05 Getting Connected

Tubing

How To Measure

Roller Track

Basic Joints

Component Accessories

10 Applications

Flow Racks

Towable Carts & Pushable Trolleys

Market Place Rack

Workstations

Work In Process Racks

Specialized Cart

22 Design & Configurations

Modular Design Technology

Base Concepts

Design Applications

25 Delivery & Supply Methods

Starter Kits

Piece Parts

Sub-Assembly

Standard Kit Form

On-Site Assembly

Welcome to Our World

Based in South Africa, EZI Systems is a pioneer in the development of Modular Structure systems and continuous improvement. The best LEAN-Fit for your company.

We specialize in creating bespoke modular structures tailored to your needs, prioritizing efficiency and affordability. Our designs are adaptable and environmentally conscious, meeting ISO 9001 standards. With a global reach, we offer quick and straightforward installation, ensuring a flexible and reusable solution for optimizing your work environment.



GLOBAL MARKET

Top global brands like Volkswagen, Isuzu, BMW, Toyota, Nissan, Ford, Continental Tyre, Behr, Lear Corporation and Yanfeng are all satisfied Ezi Systems clients.

Ezi systems provides modular structure solutions to clients across the globe. We are used across industries including the Automotive and Building industries, Agriculture, Retail and Appliance sectors, and by OEM.



ABOUT EZI MODULAR

EZI Modular Applications can be re-assembled to meet all your needs quickly.

- ◈ light and strong
- ◈ quick and simple to assemble
- ◈ re-usable in other applications
- ◈ safe (no welding or grinding)
- ◈ rust-protected
- ◈ maintenance-free
- ◈ widely applicable.

HOW WE LINK WITH YOU

- 01** We gain a sound understanding of the current situation by investigating the current business layout & infrastructure
- 02** Key improvements and implementations priced and quoted to meet your budget.
- 03** Product options selected.
- 04** Budget and timing.



GETTING CONNECTED

Basic joints, crafted from mild steel, feature electro-galvanized or zinc-plated finishes. Tubing options include PVC coated or galvanized, with wall thicknesses of 0.9mm, 1.2mm, or 2mm. The low-maintenance system is pre-treated for rust resistance, meeting ISO 9001 production standards. Versatile design for various functions.



TUBING

- ❖ Tubing: Sturdy steel construction with a choice of galvanizing or PVC coating for optimal strength, corrosion resistance, and UV protection while retaining a professional look.
- ❖ Easy Cutting: Simple pipe-cutter allows for clean and precise cuts.
- ❖ Customization Options: Tubing can be colored to order, streamlining inventory management, ensuring safety, and facilitating rework or changeover applications.



HOW TO MEASURE

Our superior quality, precision cold rolled tubing is available in a variety of lengths. In order to establish the cut length for inside and outside dimensions, refer to the figure below.

ROLLER TRACK

Roller Tracks are made of strong, rust-resistant galvanised steel, roll-formed for precision.

Roller Wheels are longwearing, molded Nylon/PVC and each is rated to bear a weight of 20 kg/wheel.

Various sizes and capacities for technical review with the client, understanding the application first



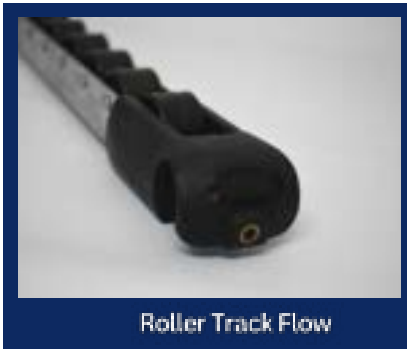
Normal Roller Track



Narrow Wheel Track



Wide Roller



Roller Track Flow



Roller Track Flow



BASIC JOINTS

E - 1



E - 2



E - 3



E - 4



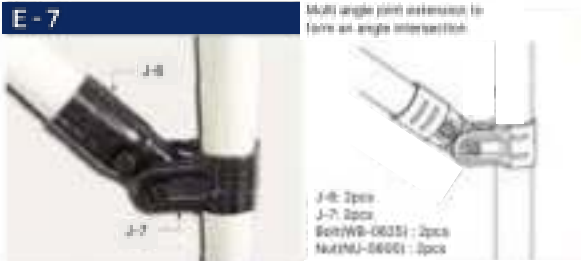
E - 5



E - 6



E - 7



E - 8



E - 9



E - 10



E - 11



The joints interlock with M6 x 25 socket head cap screws, aided by hex nuts in recessed areas for easy tightening. Fasteners are provided. Torque fittings to 12Nm (8.85 ft/lbs) using a 5mm (3/16") allen key for simple assembly.

COMPONENT ACCESSORIES



Polyurethane Blocks



Foot Assembly



Adjustable Foot



Plastic Clip



Plate Castor



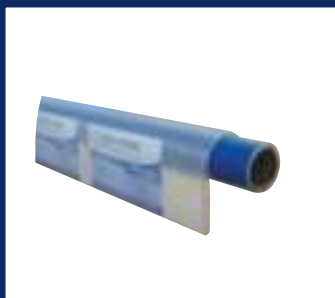
Metal Accessory F - 1



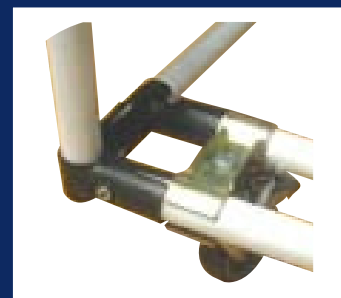
Label Holder 1



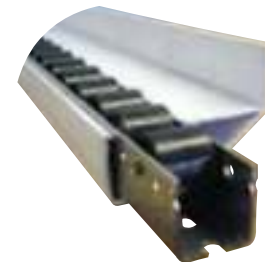
Label Holder 2



Label Holder 3



Wheel Strip Brkt W/Assy



Side Divider



MT-5144A Traction Arm



Double Pipe Wheel Plate



Single Pipe Wheel Plate



End Caps, Foot Plugs



Metal Accessory F-3B



MT-5140A Traction Arm



MT-5142B Traction Arm



MT-5149A Traction Arm



FLOW RACKS

Fax 02375/918130

E-Mail: info@stammwerk.de

Internet: www.paulmueller.de

Stammwerk Balve:

Erstellung von CAD-Konzepten

Metallverarbeitung

Holzverarbeitung

Kunststoffverarbeitung

REVOLUTIONIZE YOUR WORKFLOW

Our modular flow racks are precision-engineered to optimize workflow efficiency. These adaptable racks seamlessly integrate into your workspace, providing a versatile and durable solution for organized storage.



TOWABLE CARTS & PUSHABLE TROLLEYS

ENGINEERED FOR SEAMLESS MOBILITY

Our towable carts and trolleys are the epitome of efficiency, offering reliable transportation for goods and materials. Crafted for durability, they excel in various applications, from warehouse operations to manufacturing facilities.





MARKET PLACE RACKS

STREAMLINED STORAGE

Enhance your retail space with our versatile racks. Designed for seamless organization and display, they optimize floor space while presenting products attractively and accessibly



EFFICIENCY REDEFINED: CUSTOM WORKSTATIONS

Elevate productivity with our ergonomic workstations. Thoughtfully designed for comfort and efficiency, they provide a conducive environment for focused work and creativity, ensuring your team achieves their best.



WORK IN PROCESS RACKS

STREAMLINED WIP SOLUTIONS

Optimize your workflow with our Work-in-Progress (WIP) racks. Purpose-built for seamless organization, they ensure smooth transitions between production stages, keeping your operations efficient and on track. Elevate your workspace with our dynamic WIP racks.



SPECIALIZED CARTS

CUSTOMIZED SOLUTIONS

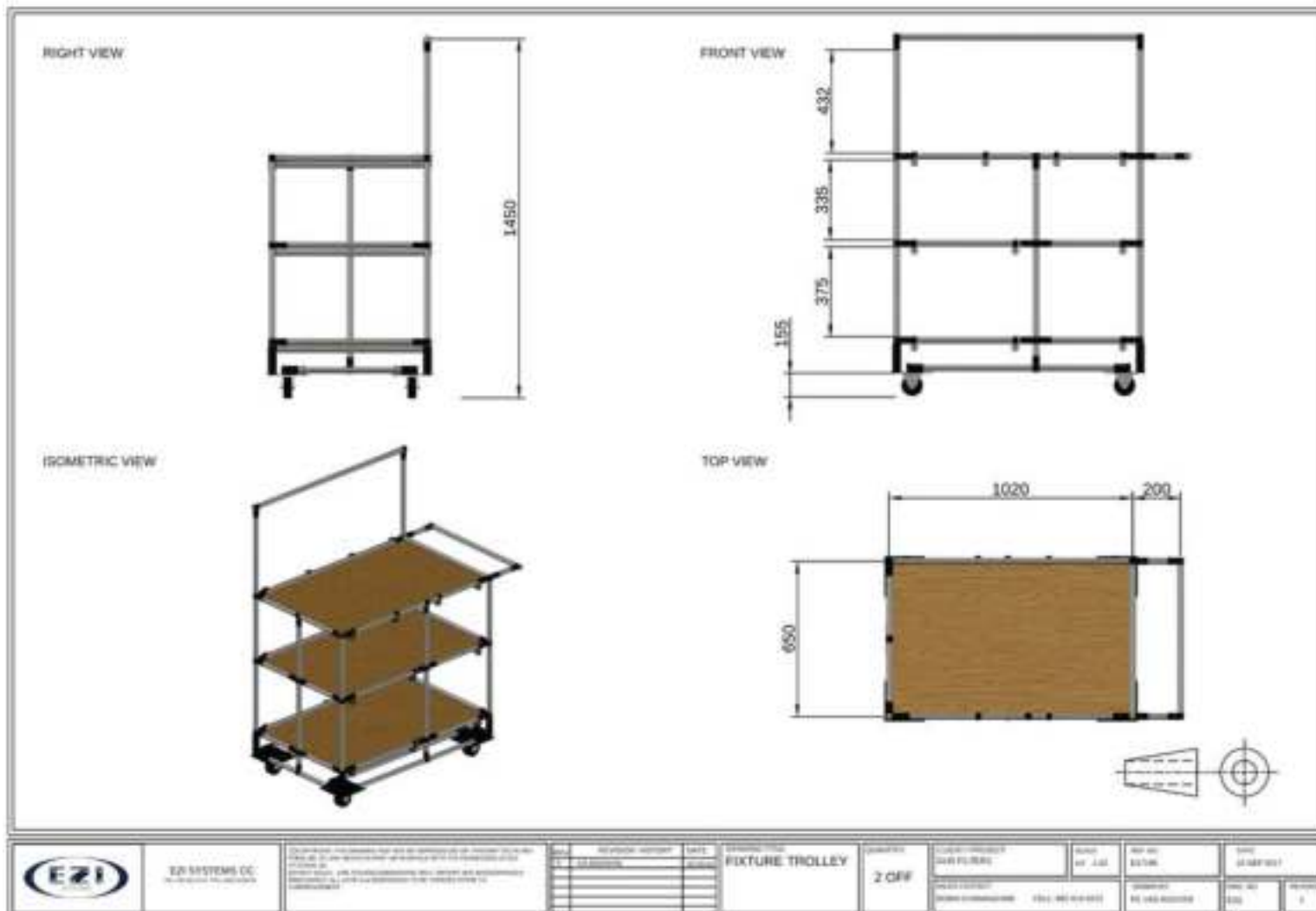
Experience efficiency like never before with our specialized carts. Designed for precise tasks and unique requirements, these carts optimize workflow and productivity in specialized environments. Elevate your operations with our customized solutions.





DESIGNS & CONFIGURATIONS

Our CAD (computer-aided design) system is operated by a fully trained expert. Our AutoCad program gives the specifications on capacities and strengths, thus enabling the design of systems customised for your needs. We are also able to strengthen existing structures and connectors for specific applications.



Our web-based Ezi design solution serves distributors and clients worldwide, accommodating their schedules and locations.

Benefits

Experience a seamless process with our all-inclusive service. From precise bill of materials for accurate costing to scalable 2-D and 3-D designs, we offer a comprehensive approach. Choose from a diverse range of standard templates for inspiration or opt for automated designs to streamline customization.

BASE CONCEPTS

A



B



C



D



STARTER KITS

Clients can order a basic stock kit for general applications, or allow EZI to design a concept for approval and ship the approved concept to them in knockdown (CKD) form.

Freighting details

- Kits are delivered door-to-door by air or by sea.
- Depending on the kit's weight, it will be packaged in cardboard or in a wooden crate for freighting.
- Kits can be delivered in sub-assembly or component form.
- Clients can assemble the kit on-site or it can be sent to a contractor to sub-assemble it for them.



DELIVERY & SUPPLY METHODS



01 PIECE PARTS - BULK ORDERS

- ✧ Ezi can supply in bulk lots depending on what the client requires.
- ✧ The products being accessories, connectors or roller tracks.
- ✧ These components are packed into secure wooden crates for industrial handling.



02 SUB ASSEMBLY

- ✧ Ezi can part-assemble the structure and freight to the client.
- ✧ There can be full lengths of tubing for the client to customise the final product.
- ✧ This will allow the standard assembly to arrive on-site ready for customising.



03 STANDARD KIT FORM

- ✧ Ezi provides customizable A, B, or C kits for prototypes/samples.
- ✧ We ensure no unnecessary parts are included in the kit.
- ✧ Our trained staff can assist with on-site customization at the client's premises.



04 ON-SITE ASSEMBLY

- ✧ Collaborate with Ezi staff for on-site assembly and prototype development.
- ✧ Ensure the best design through joint efforts with the client's team.
- ✧ Ezi's skilled staff delivers tailored designs for customer satisfaction.



 +27 41 486 1997  info@ezisystems.co.za